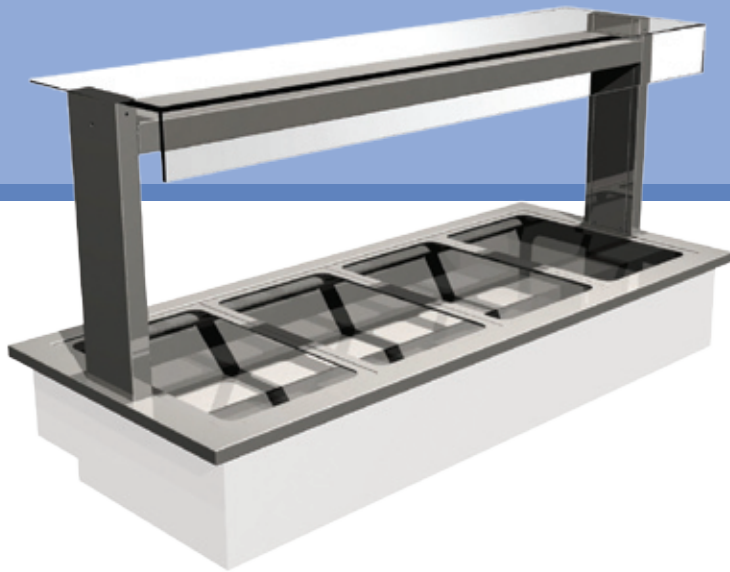


## Manhattan Heated Display Bain Marie



VISUAL SHOWS THE MHBM4-GO DISPLAY

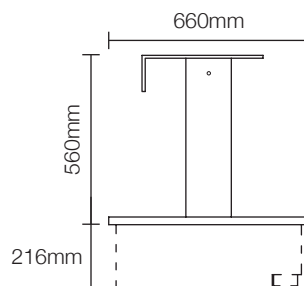
### SPECIFICATIONS

| Stock Code | Capacity gn | Overall size mm   | Weight kg | Wattage kw | List Price £ |
|------------|-------------|-------------------|-----------|------------|--------------|
| MHBM2-GO   | 2/1         | 825 x 660 x 560h  | 30        | 1.6        | £1984        |
| MHBM3-GO   | 3/1         | 1175 x 660 x 560h | 40        | 2.4        | £2108        |
| MHBM4-GO   | 4/1         | 1525 x 660 x 560h | 51        | 3.2        | £2350        |
| MHBM5-GO   | 5/1         | 1875 x 660 x 560h | 62        | 4.0        | £2468        |
| MHBM6-GO   | 6/1         | 2225 x 660 x 560h | 89        | 4.8        | £2822        |

The MHBM5-GO requires a 20 amp supply. The MHBM6-GO requires a 32 amp supply.

### COUNTER CUT-OUT SIZES

| Stock Code | Minimum cut-out size mm |
|------------|-------------------------|
| MHBM2-GO   | 780 x 650               |
| MHBM3-GO   | 1130 x 650              |
| MHBM4-GO   | 1480 x 650              |
| MHBM5-GO   | 1830 x 650              |
| MHBM6-GO   | 2180 x 650              |



For more information on this product, please contact a member of our sales team or visit our website.

Tel: +44 (0)151 548 2211 Fax: 44 (0)151 549 2179  
 Email: enquiries@counterline.co.uk Website: www.counterline.co.uk

### CHARACTERISTICS

- Distinctive art deco styling.
- The heated display bain marie offers unparalleled flexibility of use.
- This display maintains pre-heated, cooked food at a regulated temperature.
- Controllable top and base heat.
- There are two versions available; assisted service and self service.
- The Bain Marie product is also available as a wet-well option- POA.
- Gantry mounted controller on operators side (GO) as standard.
- The gantry controller can be installed on customer side (GC) on request.
- Gastronorm are not included as standard and are available as an optional extra.

### OPTIONAL EXTRAS

- Glass edge protection (per edge).
- Supply lead (length).
- Export packing case (recommended).
- Gastronorm containers.
- Drop-on 1/1 carving plate.
- Drop-in 1/1 ceran converter for bain marie.
- Drop-on round carving plate, adaptor and containers.

