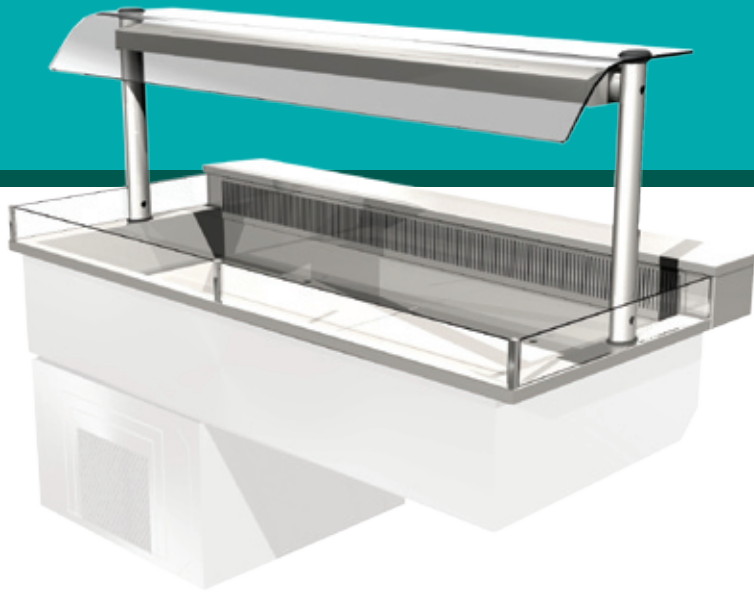


## Integrale Chilled Display Deck



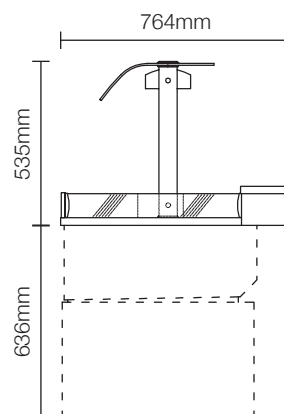
VISUAL SHOWS THE IC DK4-GO DISPLAY

### SPECIFICATIONS

Stock	Capacity	Overall size	Weight	Wattage	List Price
Code	gn	mm	kg	kw	£
ICDK2-GO	2/1	825 x 764 x 535h	124	1.7	£3231
ICDK3-GO	3/1	1175 x 764 x 535h	142	2.0	£3391
ICDK4-GO	4/1	1525 x 764 x 535h	168	2.2	£3611
ICDK5-GO	5/1	1875 x 764 x 535h	181	2.2	£3830
ICDK6-GO	6/1	2330 x 764 x 535h	198	2.5	£4747

### COUNTER CUT-OUT SIZES

Stock	Minimum cut-out size
Code	mm
ICDK2-GO	780 x 650
ICDK3-GO	1130 x 650
ICDK4-GO	1480 x 650
ICDK5-GO	1830 x 650
ICDK6-GO	2180 x 650



### CHARACTERISTICS

- Flat bed chilled display deck for the display of salads, drinks and fruit.
- Gentle flow of convected air maintains pre-chilled food at a safe regulated temperature.
- The angle of the display deck can be adjusted for enhanced presentation.
- Raised rear preparation shelf and glass riser to retain chilled air.
- Gantry mounted controller on operators side (GO) as standard.
- The controller can be installed on customer side (GC) on request.

### OPTIONAL EXTRAS

- Glass edge protection (per edge).
- Full height front glass and ends for assisted service.
- Supply lead (length).
- Export packing case (recommended).
- Non standard airflow kit for condensing unit.



For more information on this product, please contact a member of our sales team or visit our website.

Tel: +44 (0)151 548 2211 Fax: +44 (0)151 549 2179  
 Email: enquiries@counterline.co.uk Website: www.counterline.co.uk