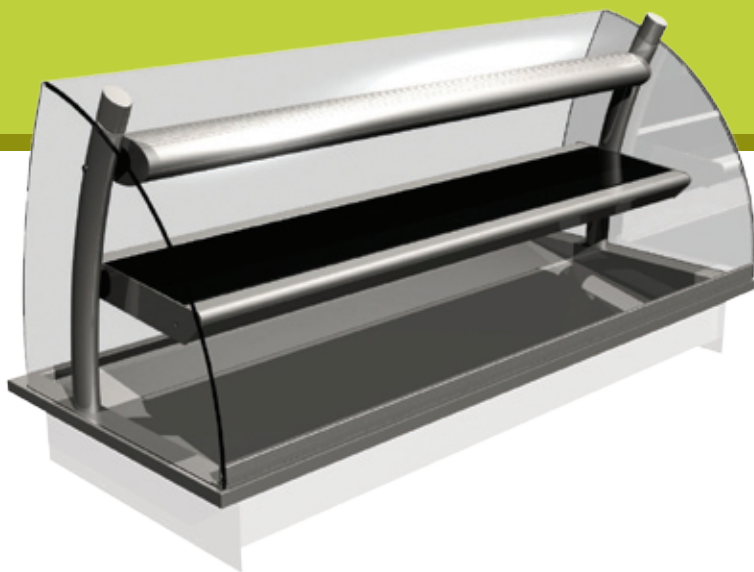


Da Vinci Heated Display Deli



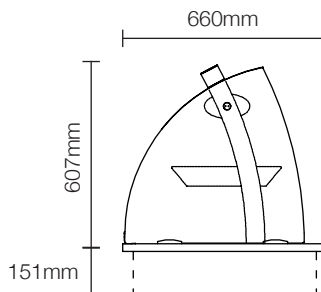
VISUAL SHOWS THE DHDL4-GO DISPLAY

SPECIFICATIONS

Stock	Capacity	Overall size	Weight	Wattage	List Price
Code	gn	mm	kg	kw	£
DHDL2-GO	2/1	825 x 660 x 607h	44	1.6	£2982
DHDL3-GO	3/1	1175 x 660 x 607h	60	2.3	£3109
DHDL4-GO	4/1	1525 x 660 x 607h	76	3.1	£3298

COUNTER CUT-OUT SIZES

Stock	Minimum cut-out size
Code	mm
DHDL2-GO	780 x 650
DHDL3-GO	1130 x 650
DHDL4-GO	1480 x 650



CHARACTERISTICS

- This display maintains pre-heated, cooked food at a regulated temperature.
- Ideal for the display of hot foods such as sausage rolls, pies, pasties, chicken portions etc.
- Fully enclosed for assisted service only.
- Base display area is angled towards the customer for optimum food presentation.
- Gantry mounted controller on operators side (GO) as standard.
- Stunning curved styling.

OPTIONAL EXTRAS

- Glass edge protection (per edge).
- Supply lead (length).
- Export packing case (recommended).
- Drop-on 1/1 carving plate.
- Drop-in 1/1 ceran converter for bain marie.
- Drop-on round carving plate, adaptor and containers (Not available on deli).

For more information on this product, please contact a member of our sales team or visit our website.

Tel: +44 (0)151 548 2211

Fax: +44 (0)151 549 2179

Email: enquiries@counterline.co.uk

Website: www.counterline.co.uk